

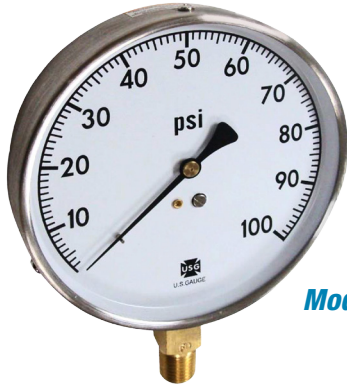


SPECIAL APPLICATION GAUGES

Model 5105 4-1/2" Mechanical Contractors Gauges

DESCRIPTION

The U.S. Gauge Model 5105 mechanical contractors gauge was designed for a wide variety of industrial applications, but is especially suited for HVAC systems. The rugged gauge case is made of stainless steel to provide the protection needed in corrosive environments. All gauges include a zero adjust feature.



Model 5105

SPECIFICATIONS

- SIZES:** 4-1/2"
- RANGES:** See spec number selection chart below
- ACCURACY:** ±1.5-1.5% of span (Grade A)
- BOURDON TUBE:** Beryllium copper (VAC and 15 psi) and phosphor bronze (compound pressures and 30 psi and above)
- WINDOW:** Polycarbonate
- DIAL:** Cupped aluminum with white background and black marking, psi scale standard with dual scale optional
- POINTER:** Black aluminum, adjustable
- CASE AND RING:** Stainless steel case and slip ring
- CONNECTION:** Brass, 1/4-18 NPT lower mount

Spec Number Selection Chart

| Specifications | Model 5105 1/4-18 NPT Lower Mount | | | | |
|---------------------|--|--------|--------------------------|---------|-----------------|
| Bourdon Tube | Beryllium Copper (VAC and 15 psi) – Phosphor Bronze (compound pressures and 30 psi and above) | | | | |
| Connection | Brass | | | | |
| Ranges | Figure Interval | | Smallest Interval | | Spec No. |
| VAC-0-30" Hg | 5" VAC | | 0.2" | | 160803A |
| 30"-0-30 psi | 10" VAC | 5 psi | 1" VAC | 0.5 psi | 160804A |
| 30"-0-60 psi | 10" VAC | 10 psi | 2" VAC | 1 psi | 160805A |
| 30"-0-150 psi | 30" VAC | 10 psi | 2" VAC | 1 psi | 160806A |
| 0-15 psi | 1 | | 0.1 | | 160808A |
| 0-30 psi | 5 | | 0.2 | | 160809A |
| 0-60 psi | 5 | | 0.5 | | 160810A |
| 0-100 psi | 10 | | 1 | | 160811A |
| 0-160 psi | 20 | | 1 | | 160812A |
| 0-200 psi | 20 | | 1 | | 160813A |
| 0-300 psi | 30 | | 2 | | 160814A |
| 0-600 psi | 50 | | 5 | | 160815A |
| 0-1000 psi | 100 | | 10 | | 160816A |